

HOW TO MAKE A BIG LUNCH PARTY HAT

YOU'LL NEED

- ✓ An A4 sheet of thick paper or card
- ✓ Coloured pencils, crayons or felt tips
- ✓ Extra decorative bits like pressed flowers, leaves, a pom pom, tin foil, tissue or patterned paper
- ✓ Scissors
- ✓ Glue
- ✓ Ribbon or string
- ✓ A stapler or hole punch

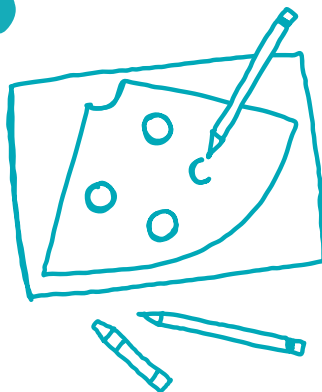


1



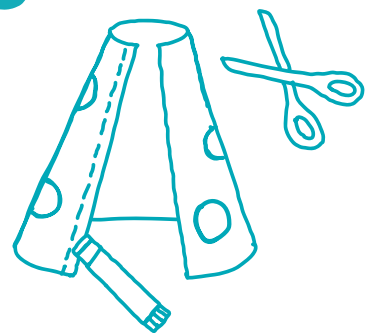
Use the template or draw the shape onto a piece of card

2



Use pens, pencils or crayons to colour in, or decorate your hat

3



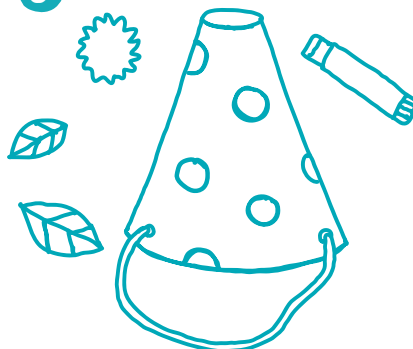
Cut out, roll it up to create a cone and secure in place with glue or tape

4



Use ribbon or string to create a chin strap

5



Attach any extras – like pompoms or leaves

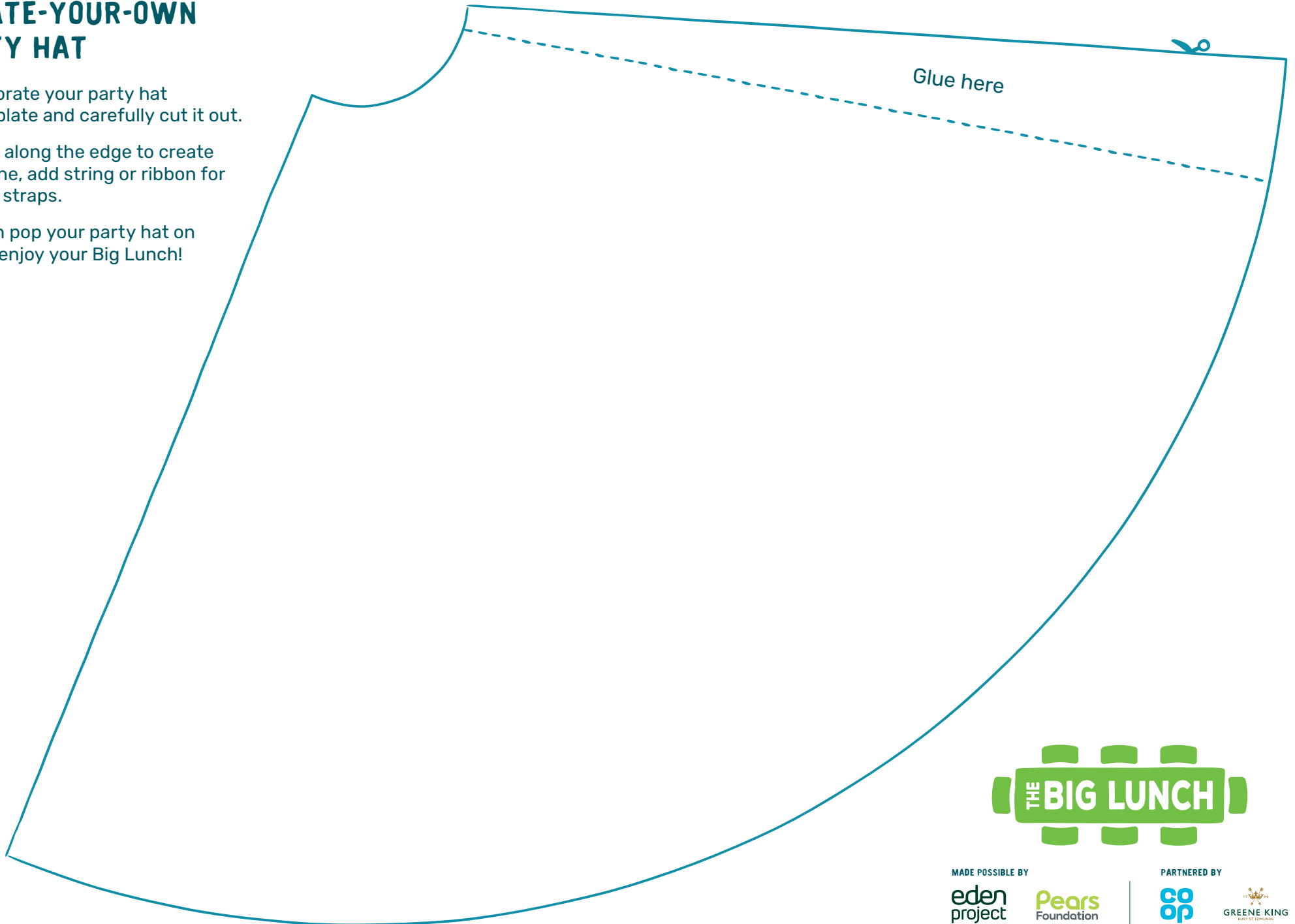
6



Ta da! You've got your own party hat!

CREATE-YOUR-OWN PARTY HAT

- ➔ Decorate your party hat template and carefully cut it out.
- ➔ Glue along the edge to create a cone, add string or ribbon for chin straps.
- ➔ Then pop your party hat on and enjoy your Big Lunch!



MADE POSSIBLE BY
eden
project

Pears
Foundation

PARTNERED BY
co
op

GREENE KING
BURY ST EDMUNDS